

SIMPLE WESTERN CERTIFIED ANTIBODY DATASHEET

[View Antibody Link](#)

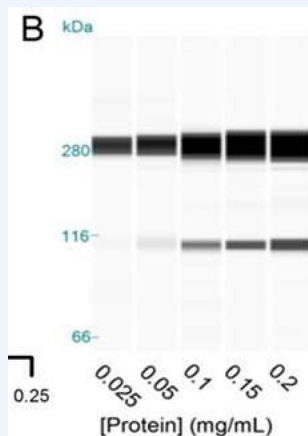


Figure: Detection and quantification of SI protein. (Panels A) and (Panels B) show the concentration-dependence of SI and α -actinin signals (Panel C) using automated capillary Western blotting of Caco-2/TC7 lysates. (Panel D) shows Caco-2/TC7 cell surface protein fraction purified after biotinylation from cells cultured on 6-well Transwell filters in glucose or sucrose for 21 days and treated on the apical side for the final 3 days with 1.5 mg/mL OLE. (Panel E) shows the total cellular SI, relative to α -actinin with data normalised to the glucose control and presented as mean \pm SEM with $n = 12$, analysed in duplicate runs. The size was determined relative to a protein standard ladder for SI in the total lysate relative to α -actinin (F), normalised and presented as mean \pm SEM with $n = 24$. * $p < 0.05$, ** $p < 0.01$, *** $p < 0.001$ from ANOVA followed by Tukey's post-hoc test. There was no change in the α -actinin loading control between the groups.

PROTEIN TARGET/ANTIBODY	
Protein Target	alpha-Actinin 1
Protein Isoform	Unmodified
Antibody Type	Primary
Host Species/Clonality	Mouse Monoclonal
ASSAY	
Sample Type	Caco-2/TC-7
Sample Concentration	Not_Stated
Antibody Concentration/Dilution	Not_Stated
Antibody Diluent	
Detection Mode	Chemiluminescence
Separation Type	Size
Matrix	66-440kDa
Observed kDa	Not_Stated

*Image collected and cropped by CiteAb from the following publication <https://www.mdpi.com/2072-6643/11/7/1505> licensed under a CC-BY license

PUBLICATIONS

1. Pyner, A., Chan, S. Y., et al. Indirect Chronic Effects of an Oleuropein-Rich Olive Leaf Extract on Sucrase-Isomaltase In Vitro and In Vivo. *Nutrients*. 2019 Jul 1;11(7):NULL. 10.3390/NU11071505. PMID:31266155.
- 2.
- 3.
- 4.
- 5.
- 6.

This antibody is validated for Gel-Free, Blot Free, Hands Free Simple Western Systems. To learn about Simple Western Systems, available Simple Western antibodies, or new antibody submissions visit the links below. For additional information, please contact support@proteinsimple.com.

[Simple Western Systems](#)

[Simple Western Antibody Database](#)

[Simple Western Antibody Submission](#)